



## E200/E300 ELECTRIC SCOOTER TOP TERMINAL BATTERY INSTALLATION

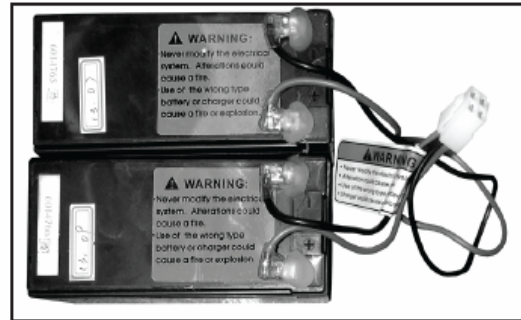
### This Kit Includes:

Two 24V Battery set

(Note: The top terminals may look different than those on your existing scooter.)

### Required Tools:

Phillips head screw driver (not included)



**CAUTION:** To prevent shock, turn power switch off and disconnect charger before removing or installing the batteries.

### Step 1: Removing the Old Batteries

**Note:** Face the side of the scooter with the charger port (handlebars to your left and the rear wheel to your right).

Remove the four screws on the top of the deck plate (Figure 1). If you are having difficulty removing the screws turn the scooter upside down. Locate the 8 screws that are holding deck to the frame. Using pliers, twist screw out from the bottom. If you have a model with a seat, the seat will need to be removed prior to removing the deck.

Disconnect the plug-in connection for wires to the control module (Figure 2). The connector is a snap lock type connection that requires depressing a small tab to allow the connector to release. Remove batteries.

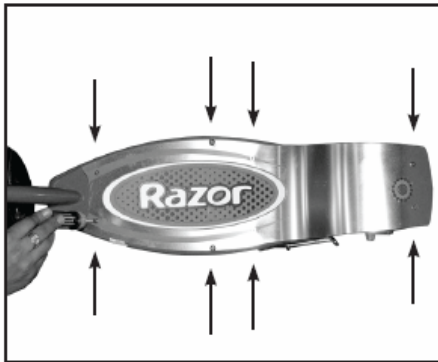


Figure 1

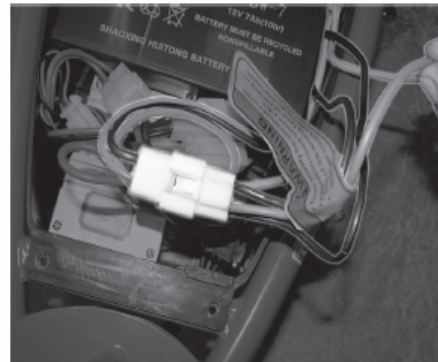


Figure 2



CONTAINS SEALED LEAD-ACID BATTERY. BATTERY MUST BE RECYCLED .

**DISPOSAL:** Your Razor product uses sealed lead-acid batteries which must be recycled or disposed of in an environmentally sound manner. Do not dispose of a lead-acid battery in a fire. The battery may explode or leak. Do not dispose of a lead-acid battery in your regular household trash. The incineration, land filling or mixing of sealed lead acid batteries with household trash is prohibited by law in most areas. Return exhausted batteries to a federal or state approved lead-acid battery recycler or a local seller of automotive batteries. If you live in Florida or Minnesota, it is prohibited by law to throw away lead-acid batteries in the municipal waste stream.

**Need Help? Visit [www.razorama.com](http://www.razorama.com) or call toll free 888-417-6272**

## Step 2a: Installing New Batteries

Locate the battery with the longer wires and place it into the battery tray (opposite the Control Module) as shown (Figure 3). Make sure the negative terminal is to the far right of the battery tray. Lay the battery down so that the terminal with the Black negative (-) is on the bottom and the Red positive (+) terminal is on top. Tuck the excess wires along the side of the battery tray (Figure 4).

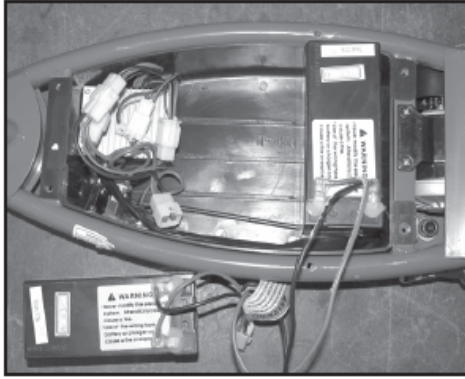


Figure 3

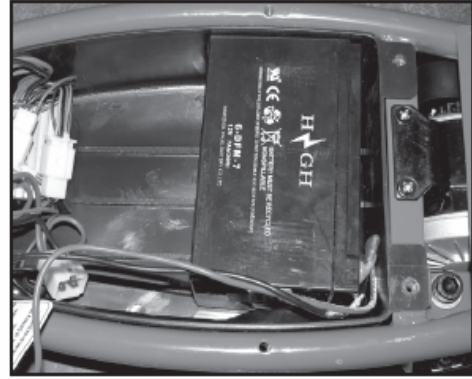


Figure 4

## Step 2b:

Place the 2nd battery into the battery tray next to the 1st battery (Figure 5) and lay it down so that the Red positive (+) terminal is on the bottom and the Black negative (-) is on the top.

**Note:** The bottoms of the batteries should be touching each other and terminals will be on opposite ends (Figure 6).



Figure 5



Figure 6

**Note:** The correct order of the terminal should be (from left to right) Red positive (+); Black negative (-); Red positive (+); Black negative (-).

## Step 3: Close the Unit and Charge

Insert the plug-in connector into the connector for the Control Module. Replace deck plate & charge unit for up to 12 hrs before using.

**Need Help? Visit [www.razorama.com](http://www.razorama.com) or call toll free 888-417-6272**