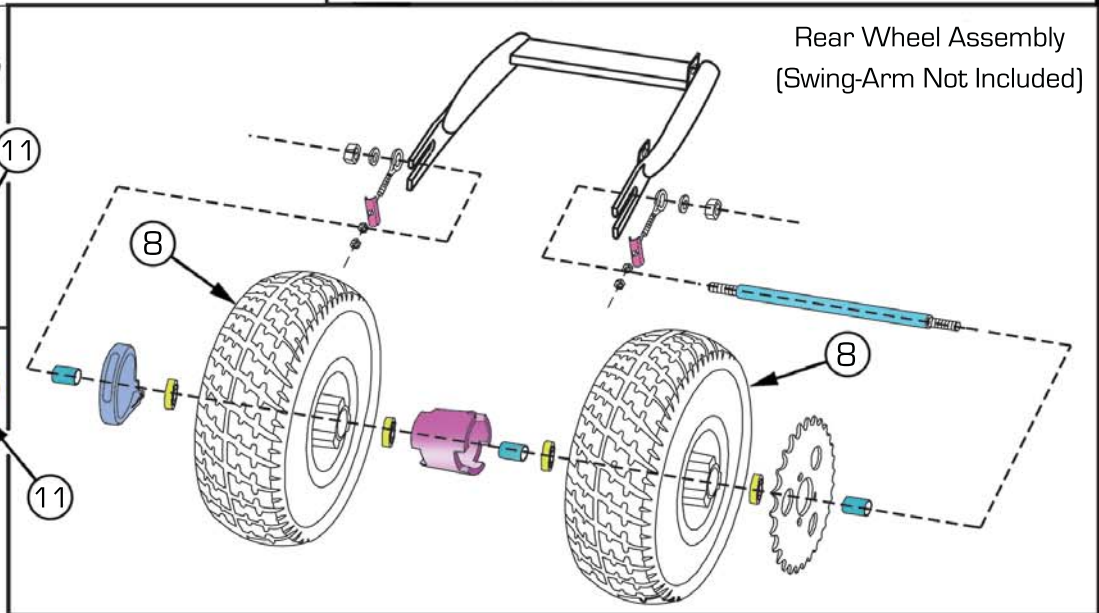
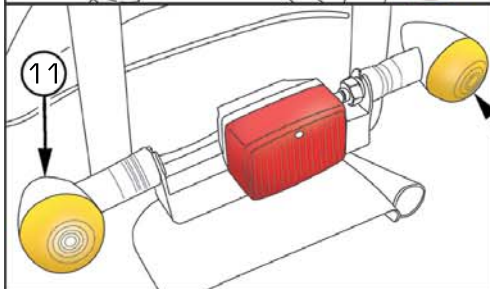
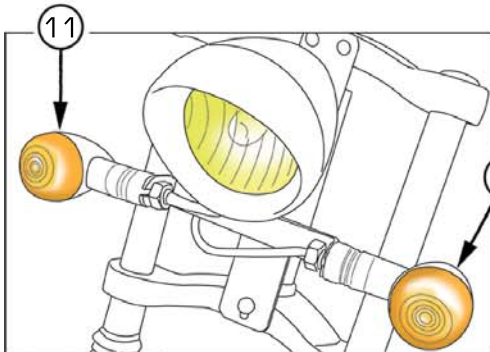
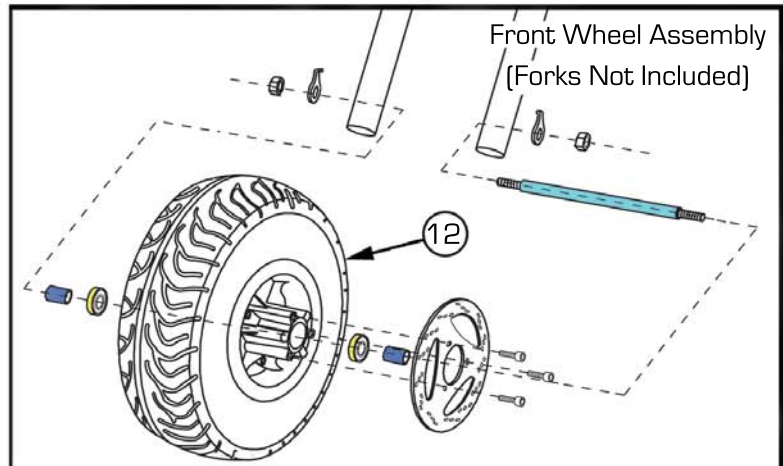
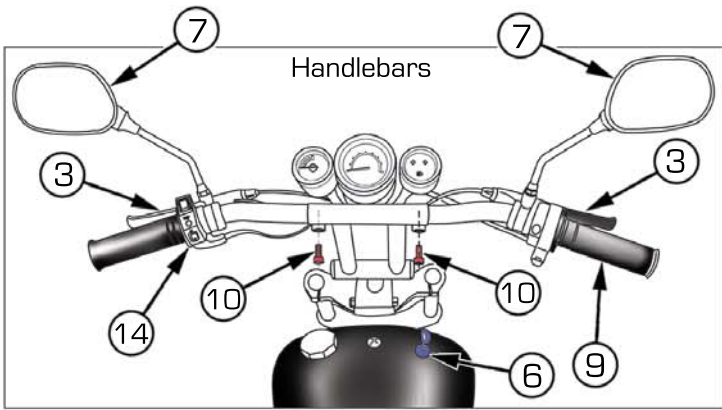
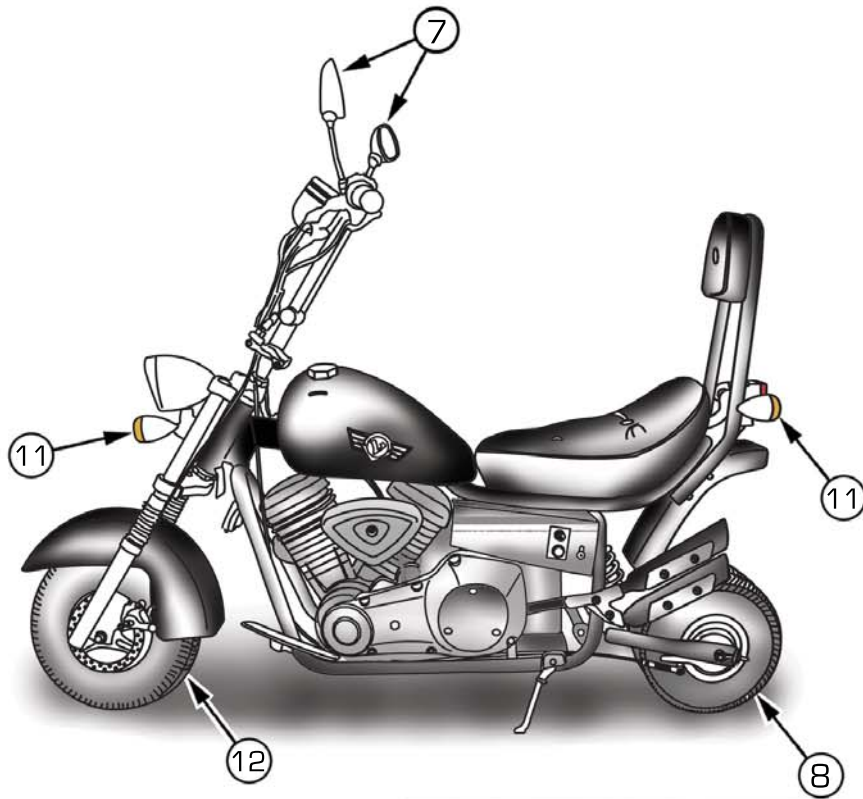
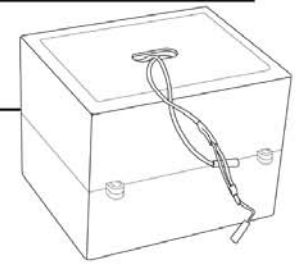
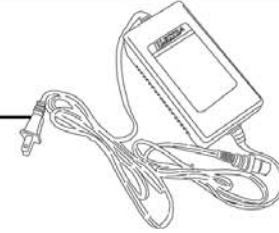
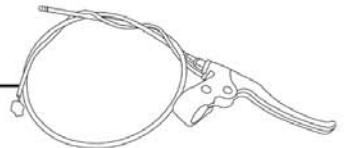

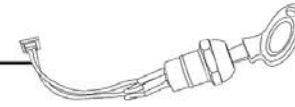
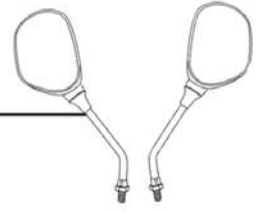
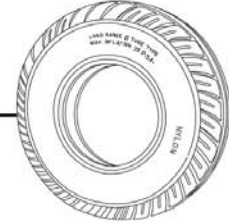
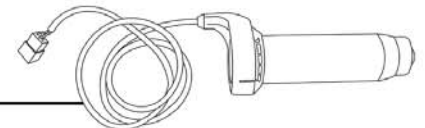
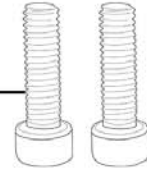
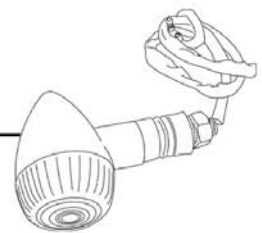
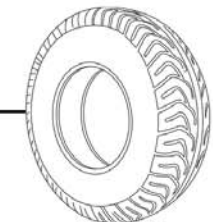
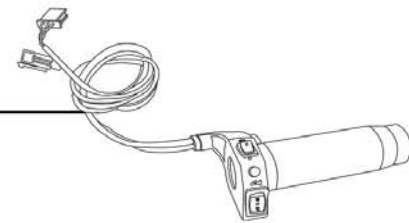



MODEL 88906 - ELECTRIC CHOPPER
See Reverse for Order Instructions



To Order Replacement Parts and Accessories, call the Electra Hotline at: 1-888-467-1234

	Name	Part Number	
①	36 Volt Battery (Electric Only)	88415	
②	36 Volt Battery Charger	88410	
③	Brake Lever (36 Volt)	33138	
④	Drive Chain (Electric Only)	88419	
⑤	Front Wheel Assembly	33185	See Reverse
⑥	Key Ignition Cylinder w/ Key (36 Volt)	33166	
⑦	Mirrors	88944	
⑧	Rear Tire	33306	
⑨	Throttle with Cable (36 Volt)	33182	
⑩	Bolts for Handlebar	88965	
⑪	Turn Signal Light (36 Volt)	33184	
⑫	Front Tire	88964	
⑬	Rear Wheel Assembly	33186	See Reverse
⑭	Horn & Light Switch	33165	
⑮	Control Panel	88418	

To Order Replacement Parts and Accessories, call the Electra Hotline at: 1-888-467-1234