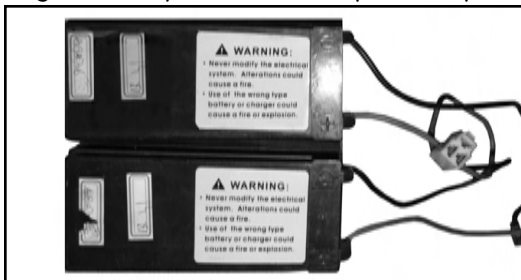


### Required Tools: (not included)

- A. Phillips head screw driver
- B. 4mm Allen wrench
- C. 8mm open wrench
- D. Small flat head screw driver

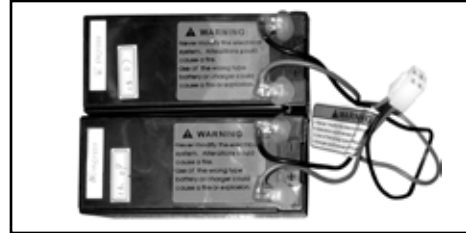
**(Note:** The top terminals may look different than those on your existing scooter.)

### Original Battery (three hole two pin battery set)

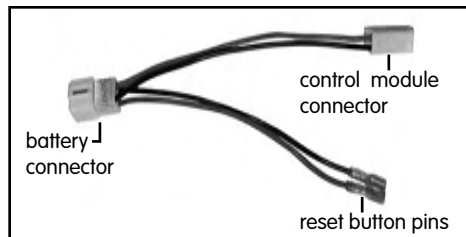


### This Kit Includes:

- A. Four pin - two 12V battery set



- B. Battery adapter



**⚠ CAUTION:** To prevent shock, turn power switch off and disconnect charger before removing or installing the batteries. Failure to follow these step in the correct order may cause irreparable damage.

### Step 1a: Removing the deck plate

Remove the four Phillips screws on the top of the deck plate. If you are having difficulty removing the screws turn the scooter upside down. Locate the 4 screws that are holding the deck to the frame. Using pliers, twist screw out from the bottom. If you have a model with a seat, the seat will need to be removed prior to removing the deck.

Remove the two hex screws in the center of the deck using a 4mm Allen wrench. Finally, remove the two Phillips screws at the rear of the deck by holding the nut on the underside with an 8mm open wrench and a Phillips screw driver on top. (Figure 1)

If applicable, remove the battery strap by removing the two Phillips screws at either end. (Figure 2)

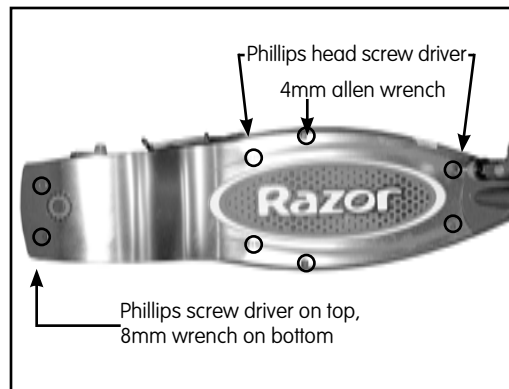


Figure 1



Figure 2

## Step 2a: Removing the batteries

Locate the battery connector to the control module and unplug connector by depressing the tab. (Figure 3 & 4)

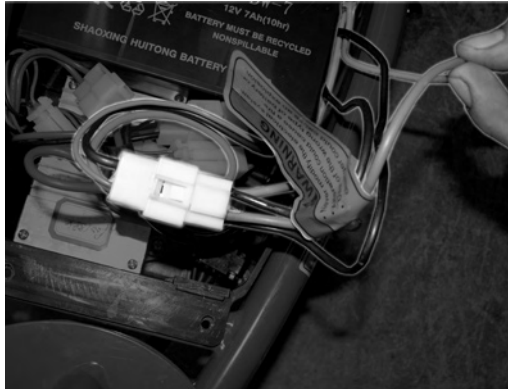


Figure 3

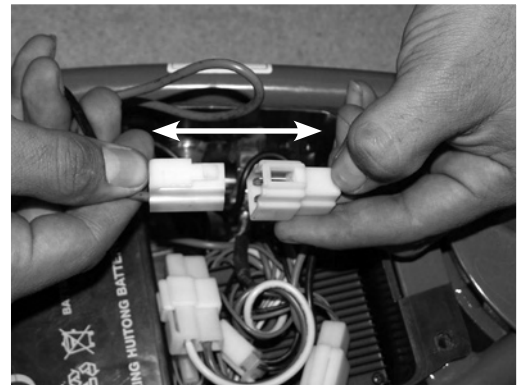


Figure 4

## Step 2b:

Lift batteries out of battery tray one at a time. (Figure 5)



Figure 5

## Step 2c:

Locate and remove the black wire and the red wires attached to the reset button (Figure 6) by using a small flat head screw driver to gently push down on the pin. Remove and properly dispose of the old batteries.

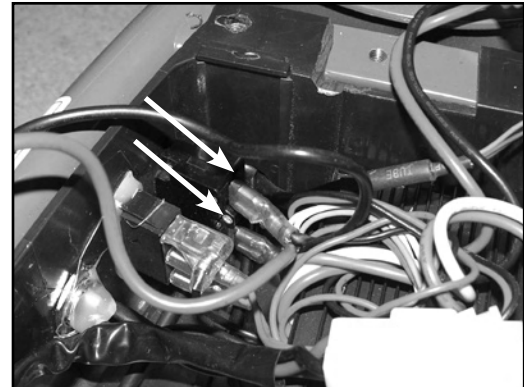


Figure 6



CONTAINS NON-SPILLABLE LEAD-ACID BATTERY. BATTERY MUST BE RECYCLED.

**DISPOSAL:** Your Razor product uses sealed lead-acid batteries which must be recycled or disposed of in an environmentally sound manner. Do not dispose of a lead-acid battery in a fire. The battery may explode or leak. Do not dispose of a lead-acid battery in your regular household trash. The incineration, land filling or mixing of sealed lead acid batteries with household trash is prohibited by law in most areas. Return exhausted batteries to a federal or state approved lead-acid battery recycler or a local seller of automotive batteries. If you live in Florida or Minnesota, it is prohibited by law to throw away lead-acid batteries in the municipal waste stream.

**Need Help?** Visit our website at [www.razor.com](http://www.razor.com) or call toll-free at **866-467-2967** Monday - Friday 8:00am - 5:00pm Pacific Time.

### Step 3a: Installing new batteries

Locate the battery with the longer wires and place it to the left of the battery tray (opposite the Control Module) as shown (Figure 7). Make sure the negative terminal is to the far right of the battery tray. Lay the battery down so that the terminal with the Black negative (-) is on the bottom and the Red positive (+) terminal is on top. Tuck the excess wires along the side of the battery tray (Figure 8).



Figure 7



Figure 8

### Step 3b:

Place the 2nd battery into the battery tray next to the 1st battery (Figure 9) and lay it down so that the Red positive (+) terminal is on the bottom and the Black negative (-) is on the top.

**Note:** The bottoms of the batteries should be touching each other and terminals will be on opposite ends (Figure 10).



Figure 9



Figure 10

**Note:** The correct order of the terminal should be (from left to right) Red positive (+); Black negative (-); Red positive (+); Black negative (-).

## Step 4a: Installing the adapter

**⚠ WARNING:** The following steps **MUST** be completed in the following order. DO NOT connect the adapter to the control module without first connecting it to the battery and reset button. Failure to follow in the correct order may cause irreparable damage to the scooter.

Plug the four pin connector on the adapter into the battery connector (Figure 11 & 12).



Figure 11



Figure 12

## Step 4b:

Plug the black wire and the red wire on the adapter into the reset button (Figure 13).

**Note:** It does not matter which color wire goes on top or bottom.

Attach wire in bottom plug first (Figure 14). If necessary, remove control module out of the battery tray to gain greater access to the reset button.

**⚠ WARNING:** To avoid future electrical problems make certain that the plastic sleeves completely cover the pins on the reset button.

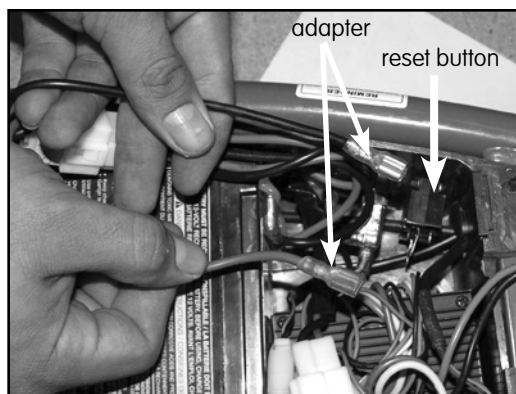


Figure 13

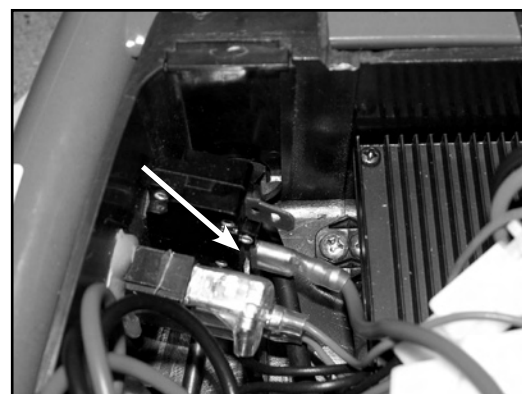


Figure 14

## Step 4c:

Plug the battery connector on the adapter into the control module (Figures 15 & 16).

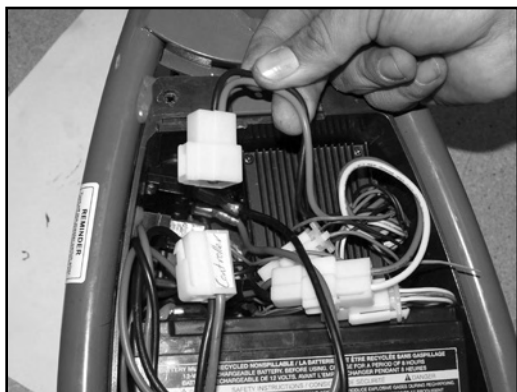


Figure 15

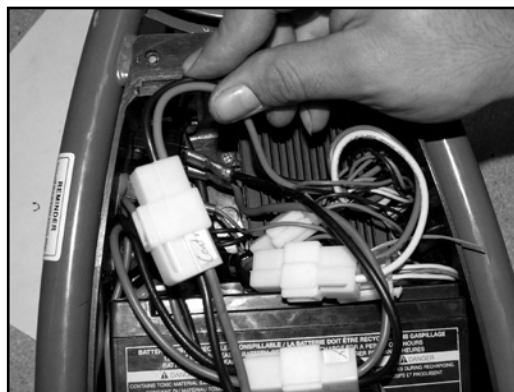


Figure 16

## Step 5: Close the Unit and Charge

Reattach battery strap (if applicable) and replace deck plate. Charge unit for up to 18 hours before first use.