



Owner's Manual

HCF Pacelite 737

Preface

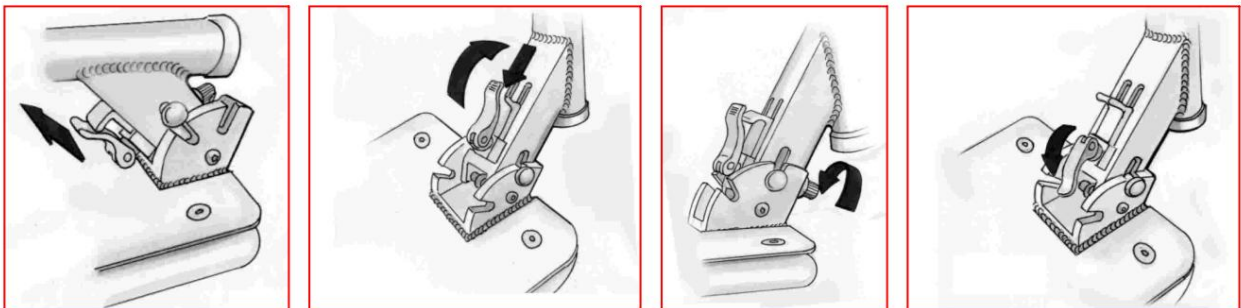
We would like to take this opportunity to thank you for choosing the HCF 737 electric scooter.

This user manual contains safety-relevant information about the maintenance and use of the vehicle. We therefore recommend that you read the user manual carefully before using the vehicle.

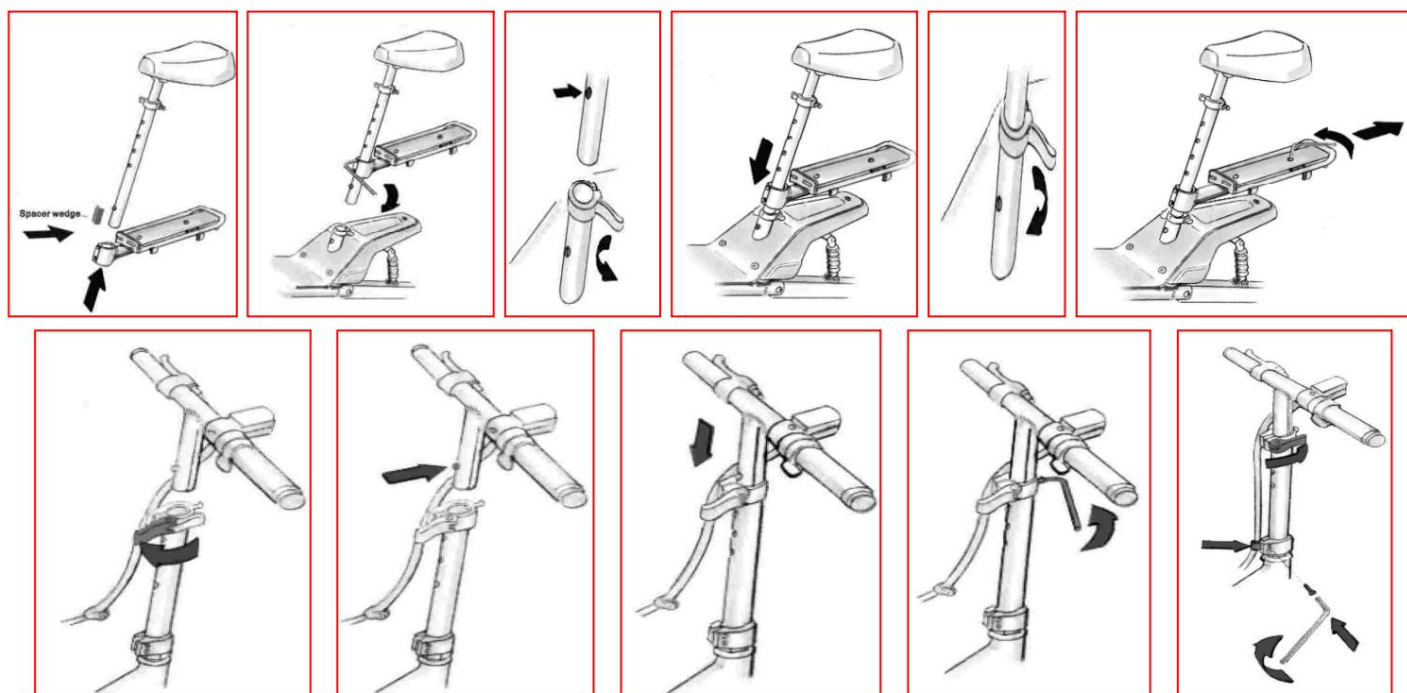
We hope you enjoy your vehicle.

If any problems arise, please do not hesitate to contact an authorized dealer in your area.

Assembly of Electric Scooter



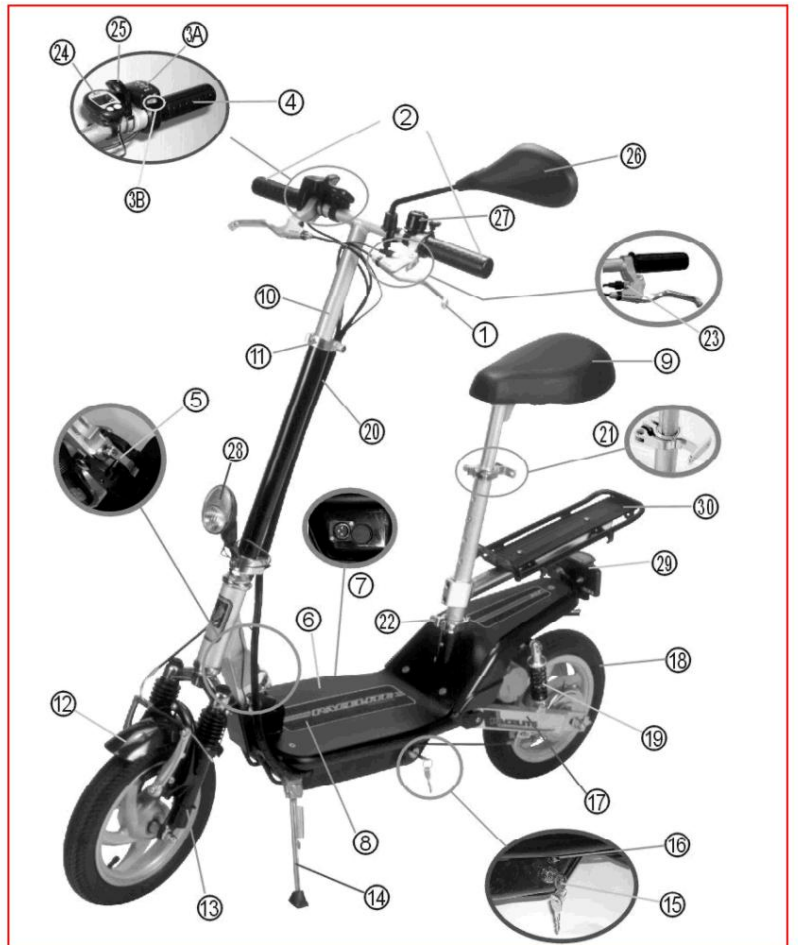
Assembly of Electric Scooter



Before each start-up, make sure that all quick-release fasteners and all screw connections are tightened.

Parts of the electric scooter

- (1) Brake lever
- (2) Handle
- (3) (a) Charge status indicator (b) Main switch
- (4) Rotary handle to accelerate/decelerate
- (5) Quick release lever
- (6) Battery compartment cover
- (7) Connection for the charger
- (8) Non-slip sticker
- (9) Seat
- (10) Handlebar height adjustable
- (11) Quick release lever
- (12) Front splash guard
- (13) Front suspension
- (14) Foldable parking support
- (15) Key switch
- (16) Overload protection
- (17) Rear swing arm
- (18) Rear tire
- (19) Rear suspension
- (20) Control cables
- (21) License plate holder with quick release lever
- (22) Quick release lever
- (23) Motor switch (brake)
- (24) Tachometer
- (25) Lighting for speedometer
- (26) Rear view mirror
- (27) Bell
- (28) Headlight with switch
- (29) Rear light
- (30) Luggage rack (load maximum 3 kg)



Comments on the individual parts

Brakes (1):

The right brake lever (1) as seen from the driver acts on the front wheel brake, the left brake lever as seen from the driver acts on the rear wheel brake. To protect the battery, the motor switch on the left brake lever, which is permanently connected to the brake, switches off the motor as soon as the left brake lever is actuated.

Charge status indicator (3):

When all 3 LEDs light up, the battery is fully charged. If 2 LEDs light up, the battery is half empty. If only 1 LED lights up, the battery must be charged immediately. The main switch should always be switched off (OFF) when the vehicle is stationary.

Twist grip (4):

Before driving off, the following points must be observed:

Key switch on (ON).

Main switch on (ON).

At least 2 LEDs of the charge status indicator light up.

Left brake lever must not be pulled.

The speed of the engine can be increased or decreased using the throttle lever on the right side of the handlebar.

You can increase the driving speed by turning the throttle lever or reduce the driving speed by releasing the twist grip. Please note that the vehicle starts moving when the throttle is turned.

Quick release levers (5,11,21):

Make sure that all quick release levers are always tightly closed!

Comments on the individual parts

Battery compartment cover (6):

The two drive batteries for the motor are located under the battery compartment cover. Work on the batteries may only be carried out by a qualified specialist. The batteries must under no circumstances be opened! There is corrosive acid inside the batteries! Battery acid is toxic, harmful to the environment and corrosive! At temperatures below 10°C, batteries lose up to 50% of their performance. Please note that the range in winter can be up to 50% shorter than in summer.

Connection for the charger (7):

Before charging, the key switch must be switched to OFF and the key removed. First plug the charger cable into the electric scooter. Then connect the charger to the power supply. The charging time is approx. 6 hours.

Height-adjustable handlebar (10):

Always hold the handlebar with both hands and never ride with one hand.

Foldable parking support (14):

Make sure that you never drive with the parking support folded down (risk of falling). In terms of load capacity, the parking support is only designed for the vehicle without driver and luggage.

Key switch (15):

The key switch is the main switch for the entire electrical system. When parking, parking or charging the batteries, always turn the key switch to OFF and remove the key.

Comments on the individual parts

Overload protection (16):

If the vehicle is overloaded, the overload protection switches off the entire vehicle electrical system. After a cooling phase of around 20 minutes, the vehicle can be put back into operation by pressing the button.

Cables (20):

When folding the vehicle, make sure that no cables become trapped.

Brake engine switch (23):

This circuit breaker ensures that the vehicle's engine is switched off when the rear wheel brake is pulled in order to protect the batteries and the engine.

Speedometer (24):

The speedometer shows the driving speed and the kilometers driven. The speedometer is powered by its own battery

Lighting for the speedometer (25):

The speedometer lighting can be used to illuminate the speedometer at night. Pressing the small button on the lighting fixture activates it. The lighting for the speedometer is powered by its own battery.

Headlight (28):

The main switch for the front and rear lights is located on the headlight. The lighting should always be switched on, even during the day. Driving with lights on accelerates the draining of the batteries and reduces the range.

Luggage rack (30):

7

The luggage rack may be loaded with a maximum of 3 kg. Always make sure that the license plate of the vehicle is not covered by luggage.

Technical data:

Type:	HCF 737
Dimension:	1193x575x1360mm
Engine power:	350 Watt 24 V
Maximum speed:	4000 1/min
Batteries:	2x 12 Volt 10 AH
Maximum speed:	20 km/h (75kg rider weight without lights)
Maximum range:	20 km (75kg rider weight without lights) Driving distance is reduced if the load is high and/ or the route is hilly. A sporty driving style reduces the distance traveled.
Loading time.	Approx. 3-4 hours
Wheel size:	12 ½
Empty weight:	30 kg
Maximum weight allowed:	130 kg

General safety instructions

If you have any questions about the obligation to wear a helmet or the obligation to carry a first-aid kit, warning triangle or other accessories, as well as the obligation to have a driving license, please note the applicable legal regulations. For your own safety, you should always wear a helmet and suitable clothing. Opt for eye-catching, bright colors so that you can be seen better and faster by other road users.

Before every journey, the vehicle should be checked for road safety.

The test includes: function of the brakes -
correct tire pressure -
function of all signaling and lighting devices -
functionally reliable general condition.

Drive particularly carefully when driving in bad weather (wet, snow, black ice). After driving, the vehicle should be cleaned and the electrical connections dried. (Use contact spray if necessary)

During longer journeys in the rain, as well as after washing the vehicle, the brake system can respond with a delay due to moisture. Therefore, after washing, brake the brakes "dry" or, when driving in the rain, apply the brakes more often to ensure that the braking effect is always perfect.

Before driving, familiarize yourself with the handling and driving characteristics of the vehicle.

Handling vehicle batteries

Only charge the battery with the original charger!

The battery (rechargeable battery) is charged using the 120 volt / 60 Hz mains power. However, this can only be saved if the battery is in good condition. Batteries lose up to one percent of their charge every day. In winter, batteries lose up to 50% of their performance due to the low temperatures. When stationary, the vehicle should definitely be stored in a frost-free but cool and dry room. The battery should be recharged every 3-4 weeks using only the original charging cable, even when it is at a standstill.

To charge the battery, the vehicle should be put into operation briefly before starting the charging process. If a battery runs out quickly after charging, this is usually due to aging (incorrect charger/cable) or frequent overcharging or deep discharging. In this case it must be replaced with a new battery. Batteries in electric vehicles are wearing parts and are not covered by the warranty.

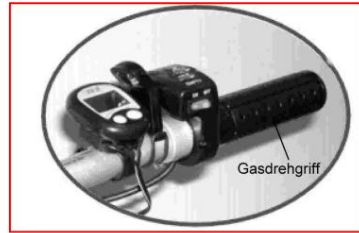
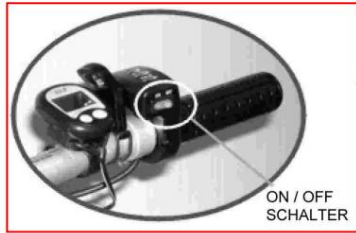


Attention: The batteries must under no circumstances be opened or refilled!

The acid inside the battery is corrosive. Therefore, be careful when handling! Acid splashes on the skin must be washed off immediately with plenty of water; if they come into contact with the eyes, seek medical attention immediately. Only use the original charging cable for charging.

Vehicle batteries are wearing parts and are not covered by the warranty!

Operation of the vehicle:



Turn on the key switch.

Pay attention that at least 2 of the LEDs on the charge status indicator light up. If only one of the LEDs lights up, the battery must be charged for at least 2 hours before starting your journey. Switch the main switch to ON.

We recommend always driving with lights on, even during the day, although the lighting limits the range.

Release the left brake lever. Carefully turn the throttle twist grip. The throttle lever on the right side of the handlebar can be used to increase or decrease the speed of the engine.

This means you can increase the driving speed by turning it or you can reduce the driving speed by releasing the twist grip. Please note that the vehicle starts moving when the throttle is turned.

When braking, always pull both brakes at the same time and try to avoid the wheels locking. (Risk of falling). Never brake too hard and always use both brakes to avoid losing control of the vehicle! When braking, pay attention to the traffic behind you.

When parking the vehicle, always turn off the key switch and remove the key. Use the parking support to park the vehicle.

Setting instructions for the speedometer AS-8

The speedometer has the following functions:

TM	stopwatch
STD	Trip odometer
ODO	Total odometer
MAS	Maximum speed
AVS	Average speed
	time



The driving speed is permanently displayed in the top line; the other functions can be accessed by pressing the *MODE* button become. You can reset the MAS/DST/AVS/TM functions to zero by pressing the *SET/RESET* button in the respective function. The Display of total kilometers ODO cannot be reset to zero.

The speedometer batteries should be replaced at least every 3 years. Be sure to write down the previous one before exchanging Total mileage. After replacing the battery, the speedometer needs to be readjusted.

Calculating the correct tire circumference:

Measure the circumference of the tire in centimeters. Divide the measured value by 8. Enter the integer value (INCH). closest to your result. (For vehicle HCF 737 the value 12 is entered)

To adjust the speedometer, set the *ODO* setting .

Press the *SET/RESET* button. Press the reset button repeatedly until you reach the correct value (*INCH*) for your tire (see calculation above). If you now press the Mode button once, please set the speed display to km/h using the *SET/RESET* button. After 3 seconds without input, the values are automatically saved.

To adjust the clock, switch to the setting



Press the *SET/RESET* button. Press the reset button repeatedly until you have reached the correct minute setting. By pressing the mode Press to switch to hour setting. Press the reset button repeatedly until you have reached the correct hour setting. After 3 seconds without input, the values are saved automatically.